

Connections

Select Sires GenerVations - WE HAVE A SIRE FOR YOU!

Select Sires GenerVations has the widest variety of Holstein genetics available today. When it comes to top performance, BREWMASTER is #1 LPI (+3203) & #1 Fat sire (+125kg), followed closely by FORK (+2972) & MOGUL (+2951). SUPERSIRE is the #1 TPI sire, MOGUL #2 TPI & McCUTCHEN is the #1 Type sire on the Top 100 TPI List. Canadian Conformation: DEMPSEY & GOLD CHIP are tied #1 Type sire, with BRADNICK #3 & ATWOOD at #5. Four of the Top 5 Proven Type sires are Select Sires GenerVations sires! Check out our NEW Canadian Holstein Directory for all our available sires! Here are a few chart toppers!

Congratulations to Michael Veldhuisen
Ydoorn Holsteins, Armstrong, BC.

Winner of 5 FREE doses of
250HO1127 MAIN EVENT.

Michael correctly answered Mogul & Bradnick to our February Select Connections Contest & his entry was randomly chosen from all the correct entries!

250HO1009 BREWMASTER #1 LPI (+3203) #1 FAT (+125kg) CDN 04/15



Lindenright Brewmaster Destin (VG-85)



OConnors Brewmaster Latte (VG-85)



Mapel Wood Brewmaster Lana (VG-85)



"Perfect everyday cows with modern dairy strength. BREWMASTER makes cows with extreme clean bone, well attached udders, lots of veination, deep crease and perfect teat placement. The perfect combination of type and production." - Joe Russwurm - Select Sires GenerVations Inc.

7HO11351 SUPERSIRE # 1 TPI Sire (+2613)

US 04/15



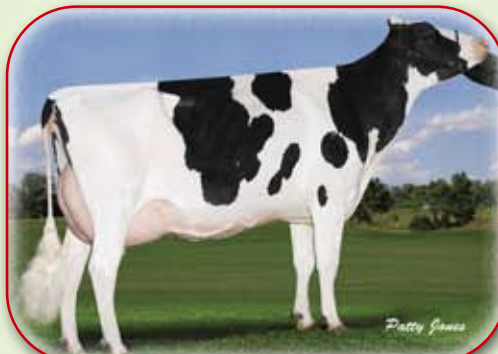
Welcome Supersire Gaila (VG-85-VG-86-MS)

"SUPERSIRE transitions from popular genomic sire to #1 Proven TPI & #1 MLPI sire in outstanding fashion! His daughters are delivering huge production with big time evaluations for milk, fat & protein. They are medium size cows with terrific rear udders & very functional feet & legs."

- Rick Verbeek,
Dairy Sire Analyst,
Select Sires Inc.

7HO10272 FORK # 1 TYPE Sire in TOP 50 LPI (+14 TYPE, +14 MS +14 F&L)

CDN 04/15



Bakkerdairy Fork 1116 (VG-86)

"FORK daughters have tremendous udders and feet & legs with real good udder quality. They also have above average dairy strength with a desire to produce and do it easily."

- Hugh Van Hout,
Western Ontario Regional Manager
Select Sires GenerVations Inc.

7HO11314 MOGUL # 2 TPI Sire (+2532)

US 04/15



Jolicap MOGUL Whisky (VG-87-VG-MS)

"MOGUL adds over 1,000 daughters to his US evaluations and solidifies himself as one of the game changing sires in the breed. Now #2 GTPI sire, MOGUL is establishing himself as Mr. Consistency! He is one of the most dominant breeding bulls, controlling the type pattern of his daughters around the world. MOGUL delivers a picturesque udder with improved F&L every time Beautiful, trouble free daughters that will take your herd to new highs"

- Rick Verbeek
Dairy Sire Analyst, Select Sires Inc.

Connections

7HO11477 McCUTCHEN (+16 Type, +16 MS, +10 F&L) GMACE CDN 04/15
1 TYPE SIRE ON TOP 100 TPI US 04/15



Walnutlawn McCUTCHEN Summer (VG-88-2YR)

"McCUTCHEN daughters are tall & stylish with exceptional udders and Feet & Legs. The show ring kind & the free stall kind!" - Charlie Will, Holstein Sire Program Manager Select Sires Inc.

"The beautiful heifers that had the industry taking notice are now fresh with terrific udders!" - Rick Verbeek, Dairy Sire Analyst, Select Sires Inc.

7HO11283 MAYFIELD (+1958 MILK CDN 04/15 & +11 Type)



Ladys-Manor Mayf Dodi (VG-86)

"MAYFIELD is the most complete Calving Ease sire in the breed. MAYFIELD has big time milk, outstanding udders and feet & legs with great fitness traits!"

- Charlie Will, Holstein Sire Program Manager, Select Sires Inc.

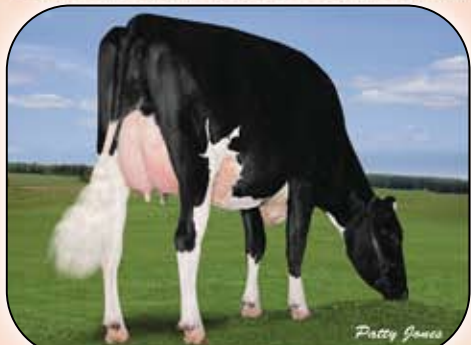
7HO9264 DEMPSEY #1 Type sire at +18, + 14MS & +16 F&L CDN 04/15



Stanhope Presence DEMPSEY (VG-88-VG-MS)

"DEMPSEY is a customer satisfaction bull. Many proclaim his daughters as being the best in their herds! His daughters display tremendous dairy strength, very correct feet & legs with beautiful mammary systems, showing great width and height of rear udder attachments. He's also a great improver of components and customers say they produce a lot more milk than his proof seems to indicate with DEMPSEY daughters at the top end of their herd. Many have gone on to use DEMPSEY in their herds again after having daughters in the milking line" - Erik Klugkist - Western Canada Regional Manager, Select Sires GenerVations Inc.

7HO10920 GOLD CHIP CDN 04/15
 Tied # 1 Type Sire (+18 Type, +17 MS, +14 F&L)

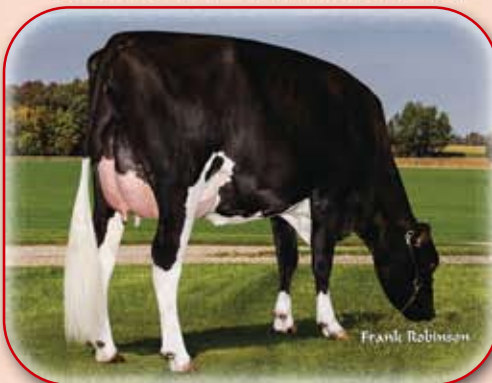


Earincliffe GOLD CHIP Daisey (VG-86-VG-87-MS)

"The GOLD CHIPS are beautifully balanced dairy cows with incredible feet & legs, outstanding frames with super mammary systems producing high quality milk. Great health traits make this bull the complete package!"

- Pat Corrigan, SMS Evaluator, East Central Ontario Select Sires GenerVations Inc.

7HO10999 BRADNICK CDN 04/15
 # 3 Type Sire (+17 Type, +16 MS, +13 F&L)



Camphols BRADNICK Ann (VG-85-2YR)

"Tall, long, dairy, silky and really good uddered cows! Good cross on Goldwyns to bring in some strength."

- Norman Carson, Quebec Regional Manager Select Sires GenerVations Inc.

7HO10506 ATWOOD CDN 04/15
 # 5 Type Sire (+16 Type, +16 MS, +17 F&L)



Galys-Vray ATWOOD Guerande (VG-88)

"ATWOOD makes tall, stylish and open ribbed cows like no other bull in the breed. ATWOOD is known for his welded on udders! If you want to breed the next great one, use ATWOOD. He has already proven he has the ability to make them!"

- Lorne Briscoe, Eastern & East Central Ontario Regional Manager Select Sires GenerVations Inc.