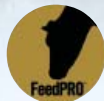


# SHAZAM



7H011248 UFM-DUBS SUPER SHAZAM-ET  
USA68863348 100% RHA-NA TR TV TL TD



Sire: Charlesdale Superstition-ET  
Dam: Ufm-Dubs Sheray-ET (VG-88-EX-MS-DOM)  
MGS: Picston Shottle-ET (GM)  
MGD: Ufm-Dubs Eroy (VG-87-GMD-DOM)



UFM-DUBS SHERAY-ET (VG-88-EX-MS-DOM)  
2-1 365d 24,680M 4.2% 1,048F 3.5% 853P

- Exciting Super son from a proven cow family
- Same cow family as 7H09501 OLEGANT and 7H09502 OMAR
- Offers the complete package of production, type and health

# February SUPER SAMPLERS

USDA Genomic Evaluation (12/11)  
(Rel 77%) +1,306Milk % Test Lbs. Net Merit (Rel 71%) +\$ 740  
Protein + .04 + 47 Cheese Merit +\$ 793  
Fat + .09 + 69 Fluid Merit +\$ 689

USDA/HA Genomic Evaluation (12/11)  
+2.96Type Rel 73% GTPI +2350  
HA Composites +2.42UDC +2.23FLC +1.60BD +1.90D  
SCS 2.69 (Rel 72%) PL +4.9 (Rel 67%) DPR +1.8 (Rel 64%)  
Calving Ease (%DBH) 12/11 Service Sire 7% 66% Rel  
Daughter 7% 59% Rel

73 %Rel T	-2	-1	0	1	2	
STATURE						1.92 T
DAIRY FORM						1.56 O
STRENGTH						1.20 S
BODY DEPTH						1.35 D
RUMP WIDTH						1.38 W
RUMP ANGLE						.31 H
LEGS SIDE VIEW						.88 P
LEGS REAR VIEW						1.72 S
FOOT ANGLE						2.34 S
FEET & LEGS SCORE						2.57 H
FORE ATTACHMENT						2.59 S
REAR UDDER HEIGHT						3.34 H
REAR UDDER WIDTH						2.99 W
UDDER CLEFT						2.87 S
UDDER DEPTH						2.33 S
FRONT TEAT PLACE						1.78 C
REAR TEAT PLACE						1.65 C
FRONT TEAT LENGTH						.26 L

aAs: 243 DMS: 456 Born: 08/19/2010  
Breeder: Stephen Van Tassel, Millbrook, NY

# JAGGER



7H011290 DE-SU FREDD JAGGER 974-ET  
USA69474061 99% RHA-NA TR TV TL TY TD



Sire: Badger-Bluff Fanny Freddie  
Dam: Ri-Val-Re Michael Jasmine (GP-81-DOM)  
2-1 3X 305d 29,138M 4.0% 1,152F 3.1% 903P PROJ.  
MGS: Lutz-Brookview MICHAEL-ET (EX-90)  
MGD: Ri-Val-Re Shtle Lucie-ET (VG-85)



RI-VAL-RE SHTLE LUCIE-ET (VG-85)  
GRANDAM OF 7H011290 JAGGER

- One of Freddie's premier GTPI sons with elite NMS
- High components and superior health traits with calving ease potential
- Elite type with UDC and FLC to go with it

USDA Genomic Evaluation (12/11)  
(Rel 77%) +960Milk % Test Lbs. Net Merit (Rel 71%) +\$ 839  
Protein + .06 + 45 Cheese Merit +\$ 923  
Fat + .08 + 57 Fluid Merit +\$ 763

USDA/HA Genomic Evaluation (12/11)  
+2.40Type Rel 73% GTPI +2418  
HA Composites +2.38UDC +3.36FLC +1.43BD +1.07D  
SCS 2.71 (Rel 71%) PL +7.9 (Rel 66%) DPR +2.1 (Rel 63%)  
Calving Ease (%DBH) 12/11 Service Sire 5% 65% Rel  
Daughter 5% 59% Rel

73 %Rel T	-2	-1	0	1	2	
STATURE						2.08 T
DAIRY FORM						.61 O
STRENGTH						1.00 S
BODY DEPTH						.64 D
RUMP WIDTH						.41 W
RUMP ANGLE						1.29 S
LEGS SIDE VIEW						2.02 P
LEGS REAR VIEW						3.20 S
FOOT ANGLE						3.56 S
FEET & LEGS SCORE						3.53 H
FORE ATTACHMENT						2.84 S
REAR UDDER HEIGHT						3.07 H
REAR UDDER WIDTH						2.69 W
UDDER CLEFT						1.56 S
UDDER DEPTH						2.64 S
FRONT TEAT PLACE						.83 C
REAR TEAT PLACE						.92 C
FRONT TEAT LENGTH						.71 L

aAs: 243 DMS: 345 Born: 10/03/2010  
Breeder: De Su Holsteins LLC, New Albin, IA

# DADDY



7H011367 RONELEE SSI O DADDY-ET  
USA70119251 100% RHA-NA TV TL TY



Sire: De-Su OBSERVER-ET (VG-86)  
Dam: Ronelee Outside Dabble-ET (EX-91-2E-EX-MS-GMD-DOM)  
MGS: Comestar Outside-ET (EX-95-CAN-GM)  
MGD: Ronelee Rudolph Dimple (EX-93-2E-EX-MS-DOM)



RONELEE OUTSIDE DABBLE-ET (EX-91-2E-EX-MS-GMD-DOM)  
5-3 3X 365d 44,530M 3.6% 1,612F 2.9% 1,313P

- Early OBSERVER son with sire father numbers
- Maternal family with proven success... 7H09107 DURABLE and 7H09446 DREAMER
- Elite type without Shottle or Goldwyn

USDA Genomic Evaluation (12/11)  
(Rel 76%) +2,303Milk % Test Lbs. Net Merit (Rel 70%) +\$ 816  
Protein + .00 + 67 Cheese Merit +\$ 832  
Fat - .08 + 60 Fluid Merit +\$ 802

USDA/HA Genomic Evaluation (12/11)  
+3.73Type Rel 72% GTPI +2484  
HA Composites +2.46UDC +2.06FLC +2.41BD +2.71D  
SCS 2.68 (Rel 71%) PL +7.6 (Rel 66%) DPR +0.6 (Rel 63%)  
Calving Ease (%DBH) 12/11 Service Sire 8% 64% Rel  
Daughter 6% 57% Rel

72 %Rel T	-2	-1	0	1	2	
STATURE						2.84 T
DAIRY FORM						3.58 O
STRENGTH						1.67 S
BODY DEPTH						2.27 D
RUMP WIDTH						2.34 W
RUMP ANGLE						.67 S
LEGS SIDE VIEW						.09 S
LEGS REAR VIEW						1.78 S
FOOT ANGLE						1.83 S
FEET & LEGS SCORE						2.59 H
FORE ATTACHMENT						2.93 S
REAR UDDER HEIGHT						4.46 H
REAR UDDER WIDTH						4.20 W
UDDER CLEFT						3.23 S
UDDER DEPTH						1.42 S
FRONT TEAT PLACE						3.38 C
REAR TEAT PLACE						3.57 C
FRONT TEAT LENGTH						2.10 S

DMS: 345 Born: 01/09/2011  
Breeder: Sherman Polinder, Lynden, WA

# THOR



**7H011487 SANDY-VALLEY THOR-ET**  
USA69701703 99% RHA-I TV TL TY

Sire: De-Su OBSERVER-ET (VG-86)  
Dam: Sandy-Valley Ramo Teresa-ET (VG-87-EX-MS-DOM)  
MGS: Ramos (GM)  
MGD: Ricecrest Terry Tory-ET (EX-93-2E-EX-MS-GMD-DOM)

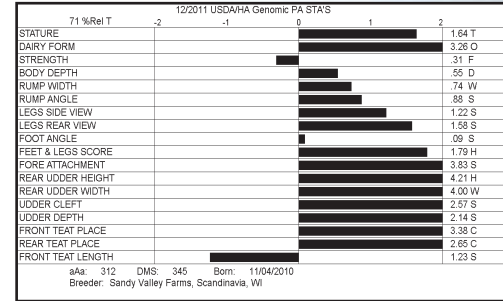


**SANDY-VALLEY RAMO TERESA-ET (VG-87-EX-MS-DOM)**  
2-3 365d 27,610M 4.1% 1,145F 3.4% 932P

- Elite OBSERVER son with a maternal line back to (EX-93) Terry Tory
- High production with exceptional fitness traits
- Calving ease potential from a family filled with VG and EX cows that transmit outstanding type

# February SUPER SAMPLERS

USDA Genomic Evaluation (12/11)				
(Rel 75%)	+1,665Milk	% Test	Lbs.	Net Merit (Rel 69%) +\$ 796
Protein	+ .00		+ 49	Cheese Merit +\$ 809
Fat	- .01		+ 58	Fluid Merit +\$ 783
USDA/HA Genomic Evaluation (12/11)				
	+3.20Type		Rel 71%	GTPI +2377
HA Composites	+2.80UDC	+1.12FLC	+0.90BD	+1.35D
SCS 2.74 (Rel 70%)		PL +7.2 (Rel 64%)		DPR +1.7 (Rel 62%)
Calving Ease (%DBH)	12/11	Service Sire	5%	63% Rel
		Daughter	6%	56% Rel



# BRANSON



**7H011488 SANDY-VALLEY BRANSON-ET**  
USA69701705 99% RHA-I TV TL TY

Sire: De-Su OBSERVER-ET (VG-86)  
Dam: Sandy-Valley R Brilliant-ET (VG-86)  
MGS: Ramos (GM)  
MGD: Regancrest Brynna-ET (EX-91)



**SANDY-VALLEY R BRYLLIANT-ET (VG-86)**  
2-0 339d 28,800M 3.8% 1,105F 3.1% 902P

- Elite GTPI OBSERVER son from the Durham Barbie's
- Solid production with components and fitness
- Outstanding type family and calving ease potential

USDA Genomic Evaluation (12/11)				
(Rel 76%)	+1,285Milk	% Test	Lbs.	Net Merit (Rel 70%) +\$ 834
Protein	+ .03		+ 47	Cheese Merit +\$ 882
Fat	+ .09		+ 70	Fluid Merit +\$ 793
USDA/HA Genomic Evaluation (12/11)				
	+3.05Type		Rel 72%	GTPI +2434
HA Composites	+3.07UDC	+1.27FLC	+0.88BD	+1.35D
SCS 2.79 (Rel 71%)		PL +7.3 (Rel 65%)		DPR +1.9 (Rel 63%)
Calving Ease (%DBH)	12/11	Service Sire	6%	65% Rel
		Daughter	5%	58% Rel

